

Violin I

Violin II

Viola

Cello

Contrabass

This block contains five musical staves. The first two staves are for Violin I and Violin II, both using treble clefs. The third staff is for Viola, using an alto clef. The fourth and fifth staves are for Cello and Contrabass, both using bass clefs. Each staff is empty of musical notation.

Vln. I

Vln. II

Vla.

Vc.

Cb.

This block contains five musical staves. The first two staves are for Vln. I and Vln. II, both using treble clefs. The third staff is for Vla., using an alto clef. The fourth and fifth staves are for Vc. and Cb., both using bass clefs. Each staff is empty of musical notation.

Vln. I

Vln. II

Vla.

Vc.

Cb.

This block contains five musical staves. The first two staves are for Vln. I and Vln. II, both using treble clefs. The third staff is for Vla., using an alto clef. The fourth and fifth staves are for Vc. and Cb., both using bass clefs. Each staff is empty of musical notation.

[Title]

10

Vln. I



Vln. II



Vla.



Vc.



Cb.



13

Vln. I



Vln. II



Vla.



Vc.



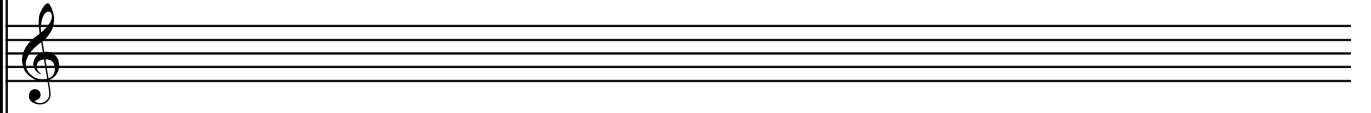
Cb.



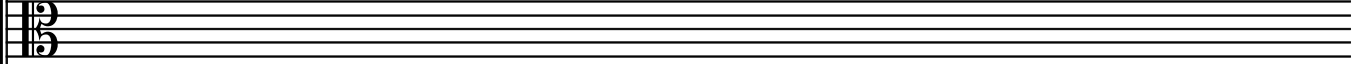
Vln. I



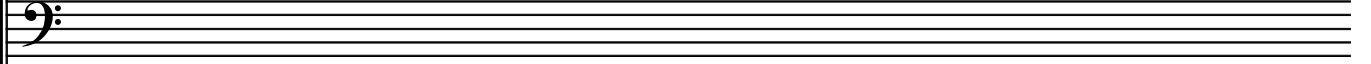
Vln. II



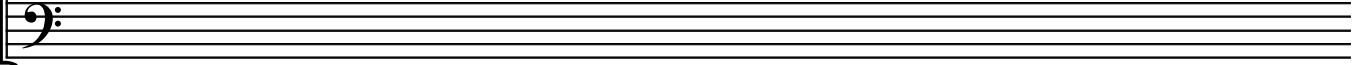
Vla.



Vc.



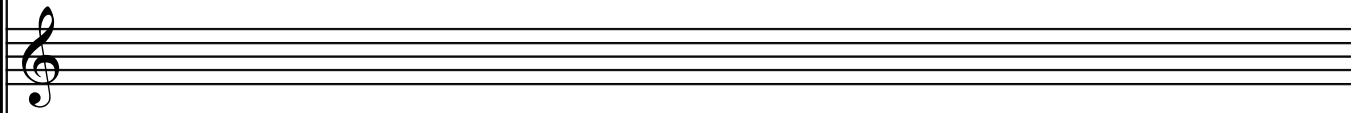
Cb.



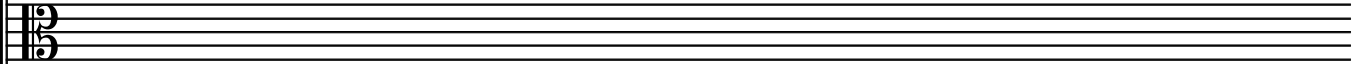
Vln. I



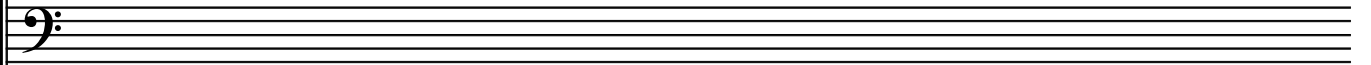
Vln. II



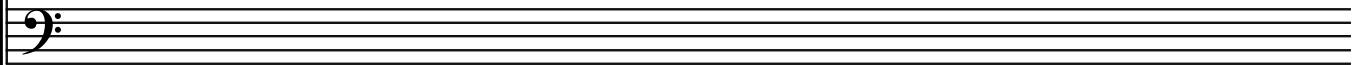
Vla.



Vc.



Cb.



[Title]

22

Vln. I



Vln. II



Vla.



Vc.



Cb.



25

Vln. I



Vln. II



Vla.



Vc.



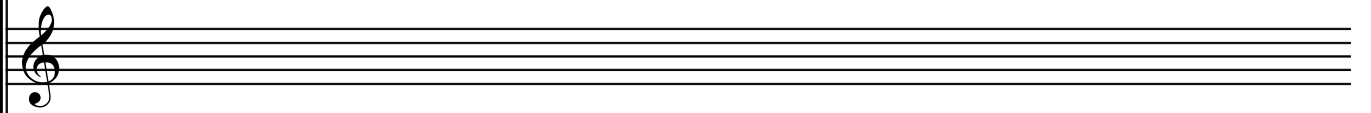
Cb.



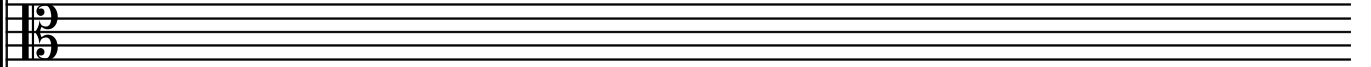
Vln. I



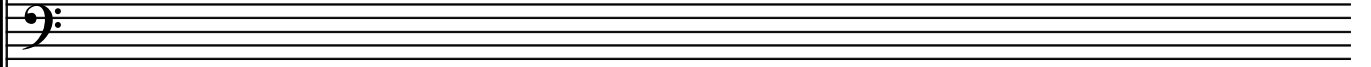
Vln. II



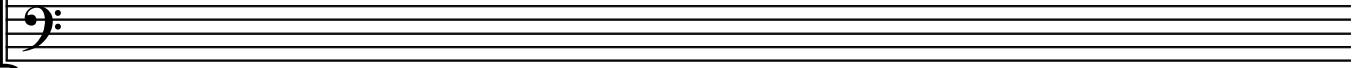
Vla.



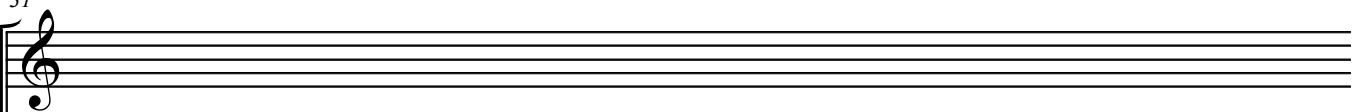
Vc.



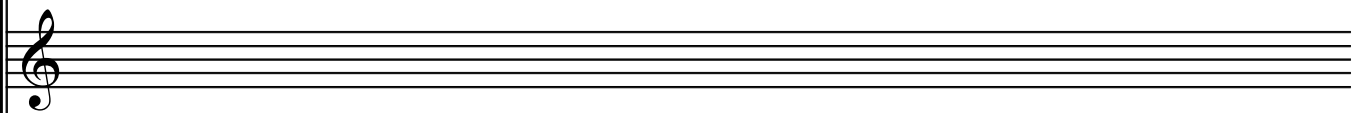
Cb.



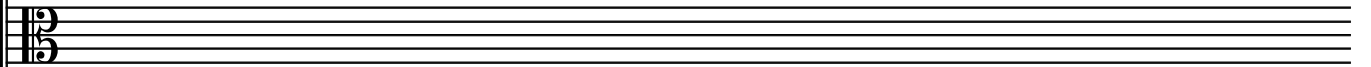
Vln. I



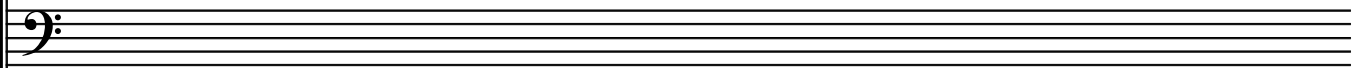
Vln. II



Vla.



Vc.



Cb.

